

Product Sheet

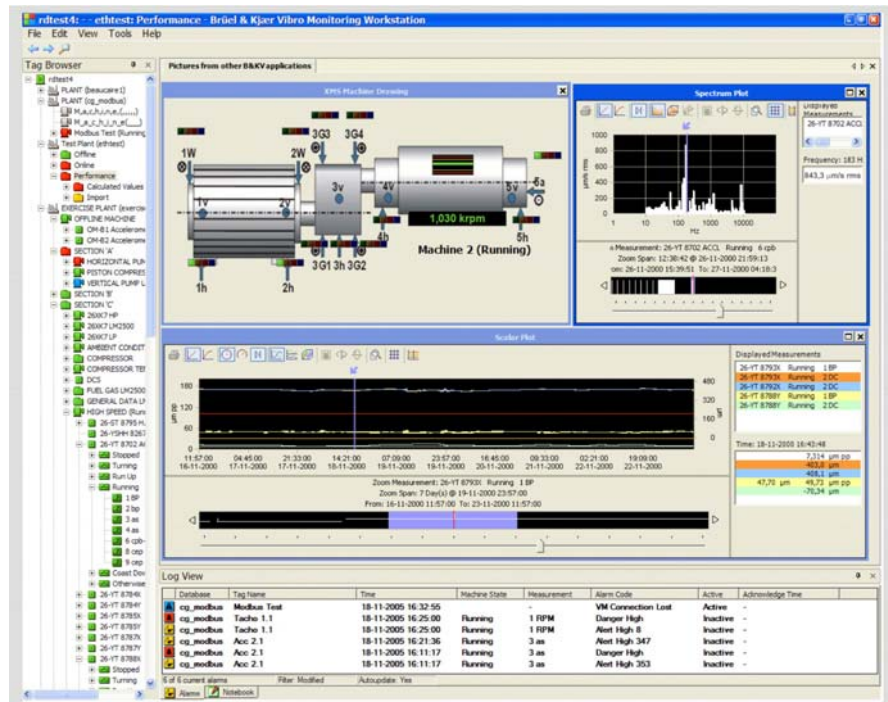
Compass 6000 – Monitoring Software Packages Overview

The Compass 6000 family of monitoring software includes the basic software and “building-block” application modules for the **Compass 6000** condition and performance monitoring system. The same versatile Windows-based user interface is also used in the setup and display software for the **VC-6000™** safety system and in the upgrade software package for the user-interface of the **COMPASS Type 3540** monitoring system.

The Compass 6000 family of monitoring software provides monitoring capability to a range of Brüel & Kjær Vibro systems.

VC-6000

The **Type 7126 Setup and Display Software** is designed specifically for the VC-6000™ safety system. Based on the same user-interface as for the Compass 6000, it is used for setting up the safety system. It may also be used in a control room for displaying the latest measurements, acknowledging alarms and resetting relays. When testing a machine - for example for baseline recording during commissioning - all measurements during a user-defined period can be recorded in a file. The data can later be displayed and analyzed using a spreadsheet program.



Type 3540 COMPASS

The **Type 7122 Compass Monitoring Workstation** is the Windows-based, web-enabled user-interface software that is used with the Unix-based Type 3540 COMPASS. It is the same user-interface used in the Compass 6000, so it is easy-to-use and flexible. The **UPG-3540 Upgrade** package includes this software plus new factory-configured servers and an installation service.

Compass 6000

Compass 6000 is Brüel & Kjær Vibro's condition and performance monitoring system using the VC-6000™ monitoring modules for data acquisition. The Compass 6000 can also display measurement data from the VC-6000 Compact Monitors, COMPASS Type 3540 and the Type 2526/2526E Data Collector. Several databases can be accessed and data simultaneously displayed for correlation purposes.

Basic Software

This is the operating system, database, server platform and user-interface software. The Compass 6000 uses the Windows-based, web-enabled **Type 7123 Basic Software**. It is a native client/server using Microsoft .NET technology with an Oracle database.

Monitoring Software

The **Type 3160 Monitoring Software** is modularized with various levels of condition monitoring functionality that can be used singly or combined to fit the user's application:

- **Type 3160-01 Detection and Trending Software** – All primary measurements from the VC-6000 monitoring modules can be monitored to machine states and saved using this software. Calculated measurements using scalar values as variables can also be made for advanced trending of the machines condition. Automatic, reliable, early fault detection can be done with the Constant Percentage Bandwidth (CPB) measurement.
- **Type 3160-02 Diagnostic Software** – Advanced diagnosis and analysis measurements and plots are provided for reliable predictive monitoring capability
- **Type 3160-03 Performance Monitoring Software** – Machine condition and performance can be monitored using accurately calculated thermodynamic parameters
- **Type 3160-04 Advisory Software** – Neural-network based diagnostic advisory software automatically scans the database for symptoms that indicate a developing fault at an early stage.

Application Software Modules

The Application Software Modules are machine-specific software/database configuration packages that ensure the 3160-03 Performance Monitoring and 3160-04 Advisory Monitoring software are best adapted to the specific application. This is done by customizing the software/database using a required service. There is a required Application Software Module for each specific machine type.

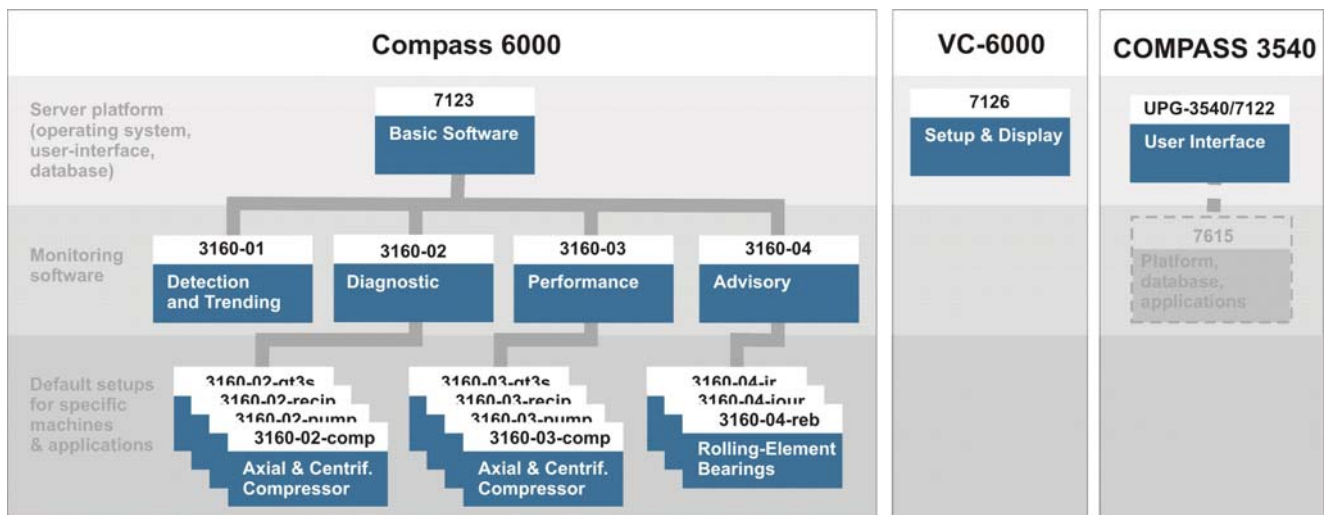


Fig. 1 Overview of Compass 6000 software

Brüel & Kjær Vibro reserves the right to change specifications without notice.