



Product Sheet

Compass 6000™ – Trending Software Introduction & Benefits

The **Trending Software, type 3160-01**, provides the **basic software platform** containing the database upon which all other monitoring software programmes operate. Therefore this software module is mandatory when other software modules, such as the Diagnostic Monitoring, Performance Monitoring or Advisory Monitoring modules, are installed and put into operation.

Benefits of Condition-based Maintenance

In today's competitive manufacturing marketplace the machine operating and maintenance strategy are often defining factors which boost the profitability level and provide a competitive edge.

A prerequisite for a “**Condition-based Maintenance**” strategy is that information about the machines' condition must be continuously available. This allows maintenance action to be scheduled according to the machines' condition, i.e. let the machine condition prompt maintenance action.

The results are an optimisation of machine operation and availability, more efficient production and maintenance planning, more lead time to order spares, lower spares inventory and a corresponding increase in business profitability.

Trending

The powerful, advanced, user-friendly trending functions of the Trending Software provide an immediate, at-a-glance, visual update of changes in the machines' condition.



A trend prognosis allows you to see the future expected progress of machine condition, plan the maintenance action timing to suit production and thus maintain profitable uptime. A correlation of various trends allows relationships between operating mode/vibration or machine/machine to be viewed.

CPB for early detection

To obtain the earliest possible warning of a real change in machine condition requires a specific measurement type.

The stability of a CPB-spectrum – in reality a large number of overall vibration bands – is the ideal tool to provide early detection of real

machine condition changes. CPB-spectrum envelope alarms provide sensitive monitoring of the entire vibration signal, without false alarms due to signal instability.

Calculated Values

Any combination of measured and/or imported values can be used to derive and trend “*calculated values*”. Changes in machine efficiency can be seen and machine performance optimised to control machine operating costs and maximise production throughput.

Technical Information – Trending Monitoring Software

Adaptive Monitoring

The unique Compass 6000™ adaptive monitoring strategy uses speed and/or digital inputs to automatically recognize a change in a machine's operating state.

When a machine state is recognized Compass 6000™ automatically switches to the correct user-defined monitoring strategy for that state. You always know whether the change in vibration is due to a real change in machine condition or only a change in the operating state.

30 Years of Data Storage.

Collect, store, and view high-resolution data for up to 30 years due to the unique data

compression method without losing any important individual information. The entire machine's condition history is always at your fingertips.

The Software

The "Trend Monitoring Software" operates under the familiar standard MS-Windows, and is an integrated part of the user interface; Compass 6000™ Monitoring Workstation.

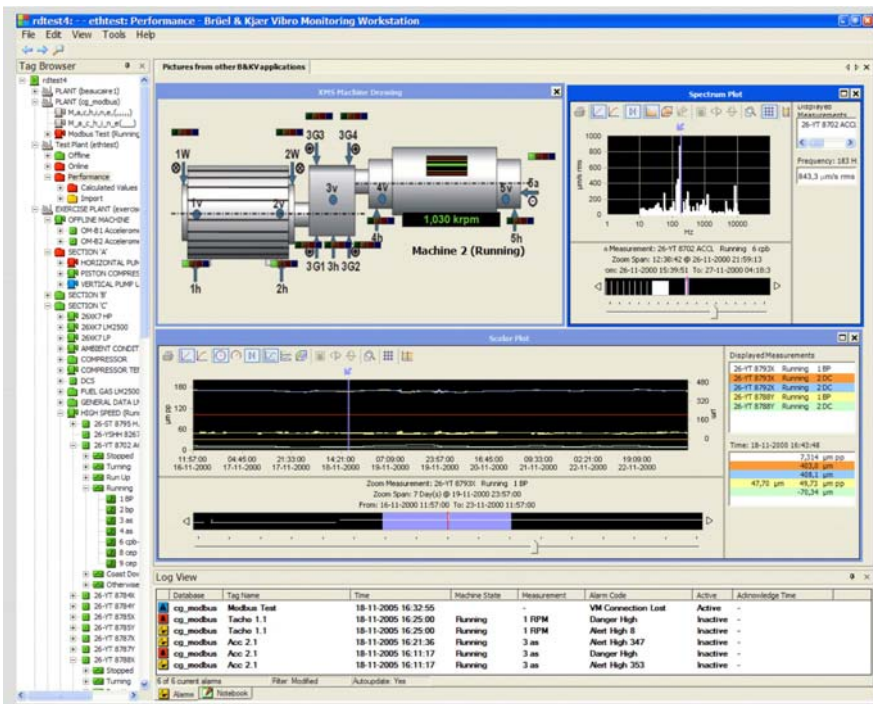
Monitoring Module Concept

The VC 6000™ "Safety Monitoring System" provides the measurements for performing trend monitoring with Compass 6000™. A virtual data acquisition module brings imported values

and data into the system, either for direct trending or calculating new values for trending in the specific monitoring application.

Safety Monitoring modules

The diagram below illustrates examples of the plots in the Windows-based user interface of the Trending Software. A "Trending Software" licence must be ordered for each SM module in the VIBROCONTROL 6000™ system which provides the signals for trend monitoring.



Brüel & Kjær Vibro GmbH reserves the right to change specifications without notice.

Brüel & Kjær Vibro A/S
2850 Nærum – Denmark
Tel.: +45 4580 0500
Fax: +45 4580 2937
E-mail: info@bkvibro.com

Brüel & Kjær Vibro GmbH
64293 Darmstadt – Germany
Tel.: +49 (0) 6151 428 1100
Fax: +49 (0) 6151 428 1200
E-mail: info@bkvibro.de