

Product Specification

COMPASS Monitoring System – Type 3540 Compass 6000 Extension Upgrade – Type UPG-3540-6000

By upgrading your COMPASS “Classic” system with UPG-3540-6000, you can extend your existing Type 2520 monitoring hardware with the rack-based VC-6000 Monitoring Modules. The upgrade also gives you the increased user-interface flexibility of Compass 6000 Monitoring Workstation. The UPG-3540-6000 package includes an installation service.



Why upgrade?

The UPG-3540-6000 package allows existing COMPASS “Classic” installations with Type 2520 data acquisition racks to be “forward compatible” with the newer **VC-6000™** Monitoring Modules hardware. The VC-6000™ provides unsurpassed versatility for both safety and condition monitoring applications. Data from both types of monitoring hardware are monitored and stored in the COMPASS “Classic” database.

The UPG-3540-6000 package also includes the **Type 7123 Compass 6000 Monitoring Workstation** software. This flexible user-interface allows

data from both monitoring hardware systems to be simultaneously displayed and correlated in feature-packed plots. This software provides more flexibility and ease of use for operators in a familiar Windows environment. The upgrade also includes an installation service to ensure a fast and smooth transition.

Software Main Features

The software portion of the UPG-3540-6000 upgrade package provides quick, easy and secure operation of your COMPASS “Classic” on-line monitoring system within a Windows environment. This versatile add-on user-interface software product is packed with features:

- **Flexible, versatile software that is secure** – The 7123 software is a true native client/server software package using the newest XML and .NET technology available from Microsoft®. All software is managed centrally so it is not necessary to manually install it on individual

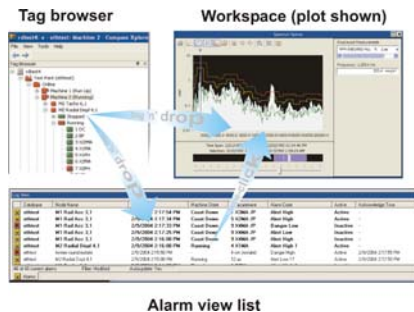


Fig. 2. Sort the Alarm view list with respect to a specific tag by dragging the tag from the Tag browser and dropping it in the Alarm view list. For quick review of plot data relating to a specific alarm, double-click it from the Alarm view list. You can also see plot data by dragging a measurement point from the Tag browser and dropping it into the Workspace.

workstations. All that is needed to run the 7123 software is the Microsoft Explorer™ browser. This makes the software 100% web enabled so data can be accessed by all password users over the Internet, anywhere in the world.

- **Full overview** – You can easily navigate through machines and measurement points in all databases on your COMPASS “Classic” server and display the relevant alarm status and measurement data - all in the same screen. This gives you a quick overview of the condition of all machines in your plant, and makes it easier for you to make operation and maintenance decisions.
- **Easy to use** – The Windows functionality used in the 7123 is intuitive and can be learned quickly. A user with the necessary privileges can very quickly set up plots and make distributed control system (DCS) type machine mimic view screens. All this information can be easily pasted into a report.
- **Extensive data display** – The monitoring software can present vibration and process data in a number of different, resizable plots. The graphic search window in the plots makes it easy to look at and select which data to display in the plots. Data can also be displayed as data read-out objects with alarm colour-coding within existing machine drawings or photographs as a background.

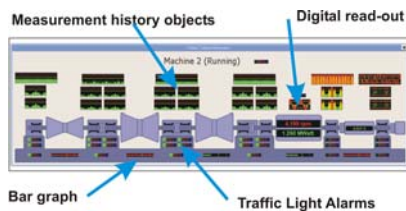


Fig. 3. 7123 software offers several view objects that display current scalar measurement values and alarm status.

Software Functionality

Tag Browser

This function allows you to navigate through the machines and measurement points from one or more COMPASS “Classic” databases on the COMPASS “Classic” server. The colour of the icons in the Tag browser informs you about alarm status, current machine states, disabled tags, etc.

Alarm View

The Alarm view function offers an extensive set of features. Alarms from several databases can be shown in the same list, and are automatically and continuously updated. Advanced filtering capabilities allow different users to define exactly what they want to see (e.g. for control room operators, machine specialists, maintenance staff, etc.). The alarm list can show for example only safety related alarms, alarms related to a specific machine, unacknowledged alarms, active alarms, alarms for a specific measurement types or any combination of these, and many others. Each user can save and retrieve preferred filter settings.

Unacknowledged alarms appear as bold, and acknowledged alarms that are still active appear in the list with normal font.

Machine View

Machine view gives an at-a-glance overview on the measurement and alarm status of one or more machines and their measurement points from one or more COMPASS “Classic” databases. These windows can be easily created by overlaying view objects over an existing machine drawing or photograph. All the view objects shown in Fig. 3 also give alarm information.



Fig. 4. There are unlimited possibilities in configuring a machine view window.

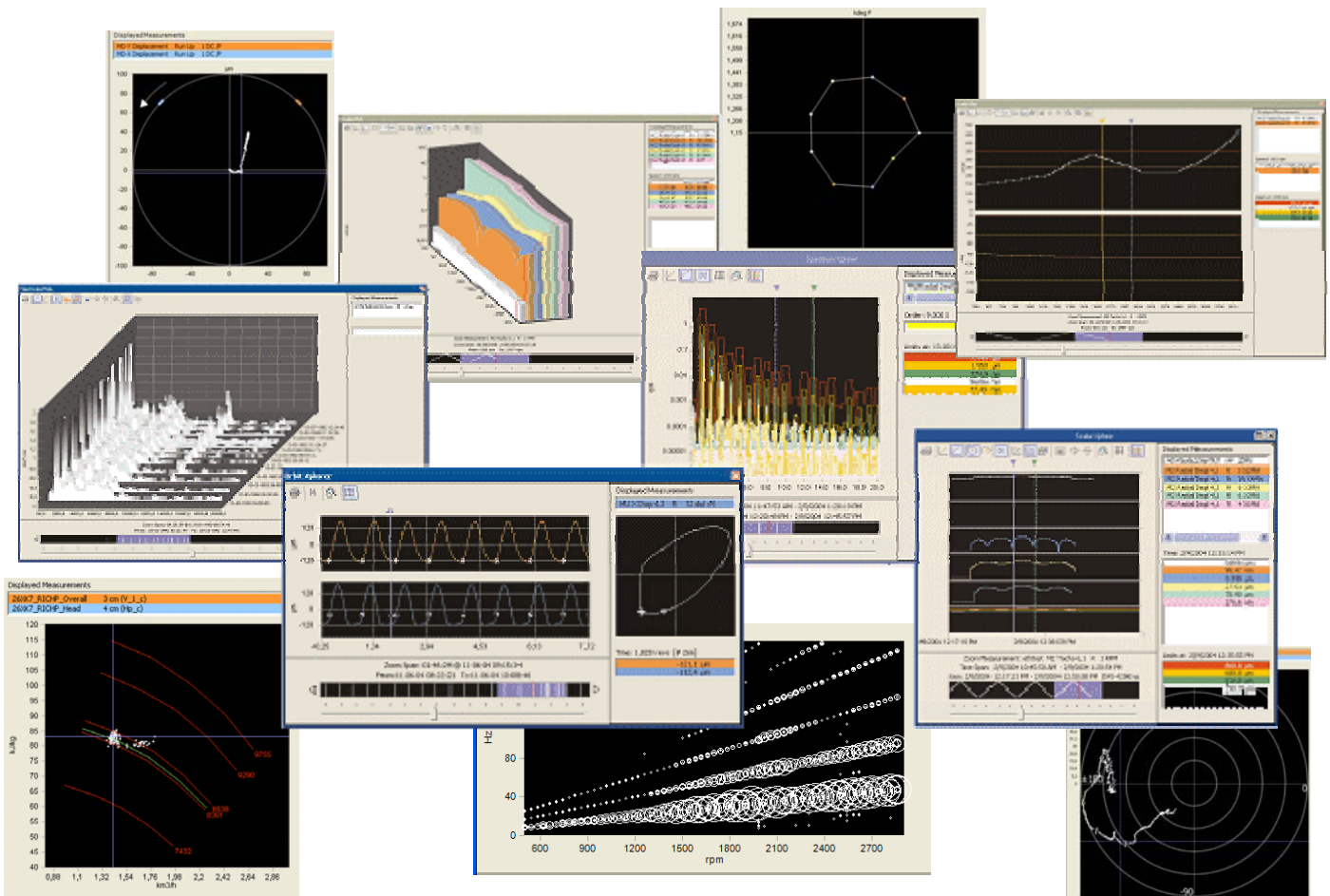


Fig.5. Many plots are available with the 7123 software. From the top clockwise: Shaft centreline 3D scalar plot, EGT-plot Bodé plot, spectrum, , Scalar vs. Scalar Performance plot, waterfall plot, orbit plot. Spectrum plot, Campbell plot and stacked multi-trend scalar history

Plots

All on-line vibration and process measurements can be viewed in various plots, and include cursors. Graphic zoom functionality lets you look more closely at the data. The selection window is a unique, powerful tool that displays the data available and allows you to graphically select the data you want to display.

Implementation Service

The UPG-3540-6000 upgrade package includes an implementation service where the factory pre-configured software is installed on the existing or new servers. The 2-day on-site service includes setting up the servers so everything is operational with no unnecessary downtime or loss of data.

Specifications UPG-3540-6000

Software Included

- **Type 7123 Basic Monitoring Software** – This monitoring platform software allows data to be acquired from the VC-6000™ and stored in the COMPASS “Classic” database.

Software NOT included

- **Type 3160 Compass 6000 Monitoring Software Modules** – These must be ordered separately. See the respective Product Specifications for a description of these
- **SCO 5.0.7** - UNIX operating system upgrade is required but not included
- **MKS XVision** – Remote system setup of COMPASS “Classic”

Optional Installation Service

UPG-3540-6000 can be installed on-site and re-commissioned as a service.

VC-6000™ Monitoring Hardware Requirements

A **CI-615** or **CI-620 Communication Interface Module** is needed per rack to acquire data and alarm information from the appropriate number of SM-610 Monitoring Modules.

Existing Server Requirements

Operating system

Windows 2000, Windows XP or higher with Internet Explorer v. 5 or higher.

Hardware

CPU - 1GHz or higher

RAM – Minimum 100MB free RAM

LAN – 10Mbit minimum

Graphic card – 1024 x 768 pixels or greater

Brüel & Kjær Vibro reserves the right to change specifications without notice