



Pocket PM

Protrend XT

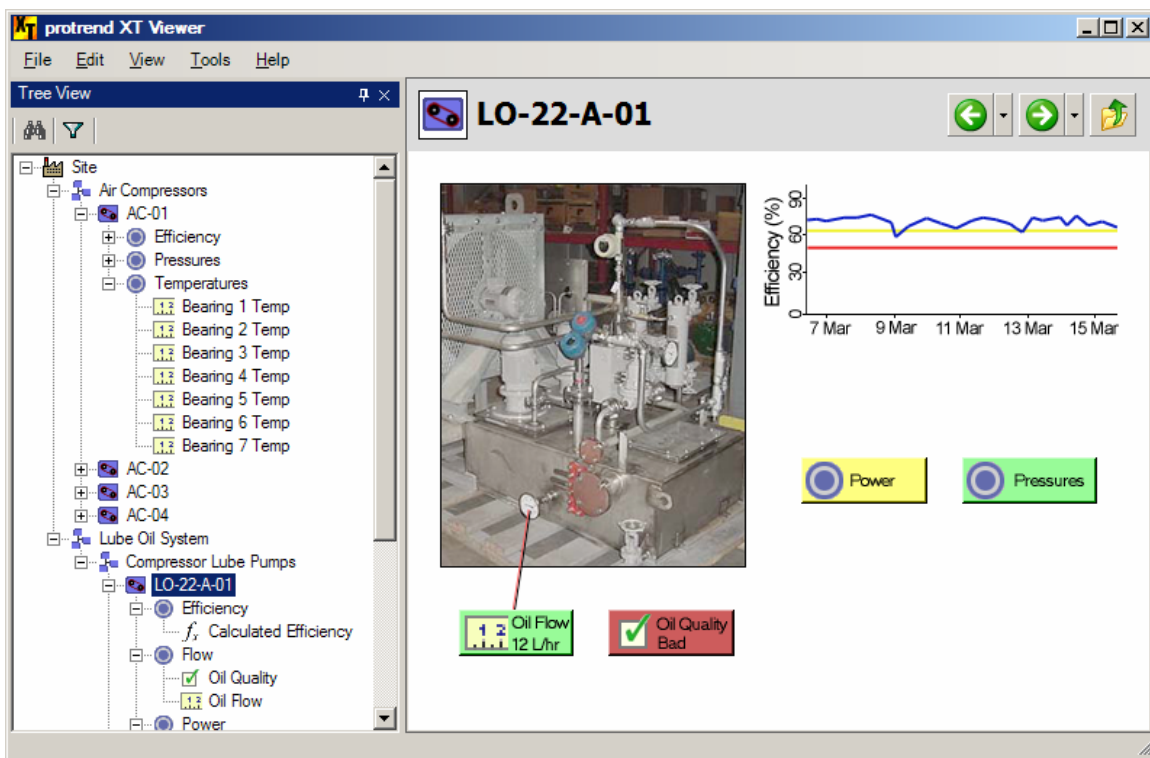


*Handheld
Machine Performance Data Collector*



Product Data

- *Smart Data Collector Pocket PM*
- *User software Protrend XT - Type NV6714*



Question: *What do you do with all those paper log sheets that your operators spend valuable time filling in?*

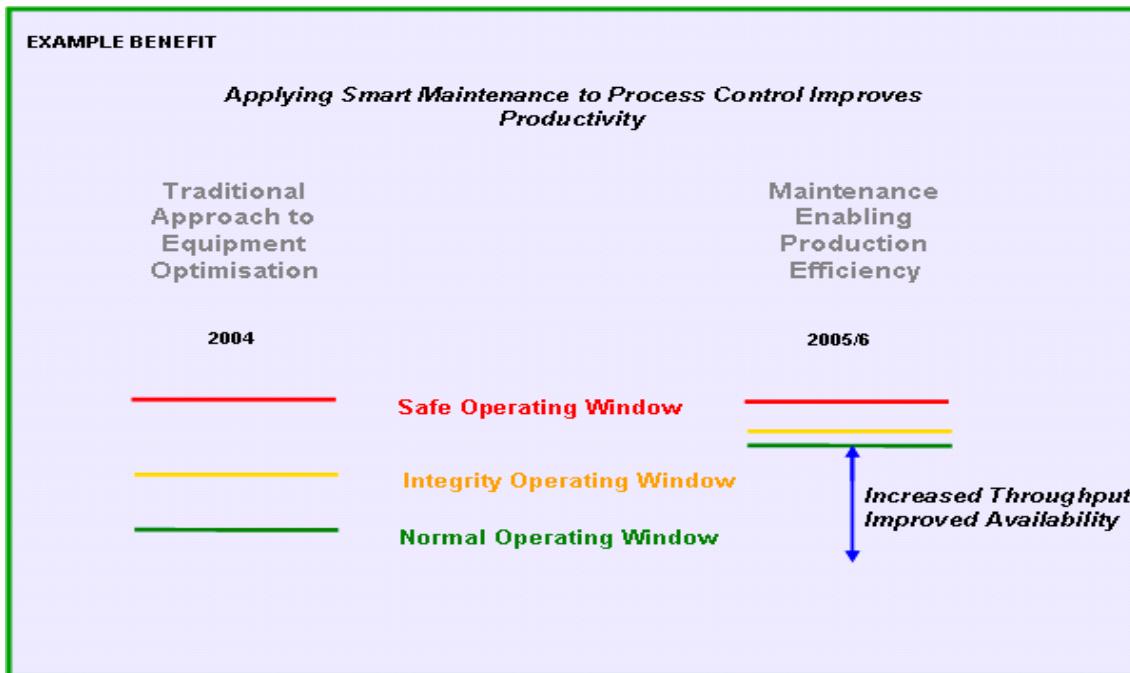
- **“File them in a binder next to the ones collected over the years”**
- **“Manually enter the results into a spreadsheet”**
- **“Scan them into a PC for storage”**
- **“Nothing”**
- **“We have most of our process data on a scan or DCS”**



Pocket Performance Monitoring

Pocket PM is an off-line machine performance data collector that employs state-of-the-art technologies to unlock the full potential of your process and performance monitoring program. This system allows those closest to the machines to play an important role in gathering process information and making effective and informed decisions.

Having the right data at hand and having the confidence in the information being provided leads to better control and process optimisation.



Integrating this information with critical Condition Monitoring techniques provides improvements in Asset Availability and Reliability.



Stand-alone or Integrated

Pocket PM may be used as a stand-alone system on your desktop PC. Powerful trending and analysis features are integrated into the supporting PC software, *Protrend XT*. Not only does *Protrend XT* natively communicate with *Pocket PM*, but it may be configured to transfer and view data between third-party systems via industry-standard communications protocols.

Pocket PM has also been designed to integrate seamlessly with different Condition monitoring systems. Communication with performance monitoring solutions is made available through industry-standard communication protocols. The data collected can be trended alongside other data such as vibration or oil analysis. Collected data may also be used as part of performance monitoring parameters in other calculations.

The *Pocket PM* systems can be used in standard industrial application or Ex environments



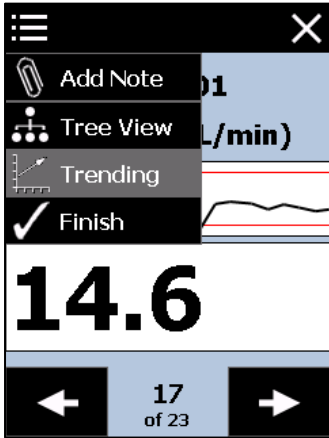
Type NV6238



Type NV6242

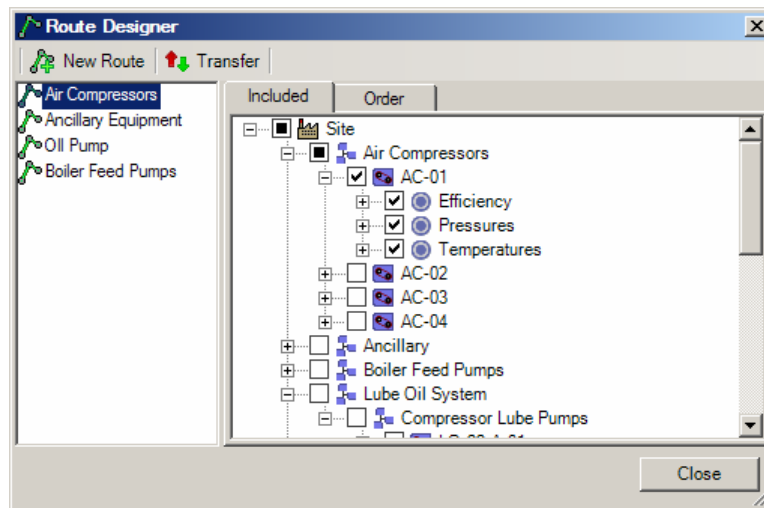


Interactive and User-friendly



Pocket PM was designed with the aim of removing the endless paper trail of log sheets. It is simple to operate, intuitive and trouble-free to use by operators and provides instant feedback. A backlit display and a high-intensity colour scheme ensures the screen is visible in all lighting conditions. Simple menu options and on-screen help guide the operator with no prior training required. *Pocket PM* can be operated using the touchscreen or keyboard, and has been designed for use by operators wearing thick protective gloves. A wrist strap comes standard, making *Pocket PM* comfortable to hold and travel on-site with (belt strap options are also available).

Inspection routes can include any number of points, and be ordered in a way that is most convenient and fastest for the operator to complete. The operator may also skip to particular areas of the plant using the plant tree functionality.

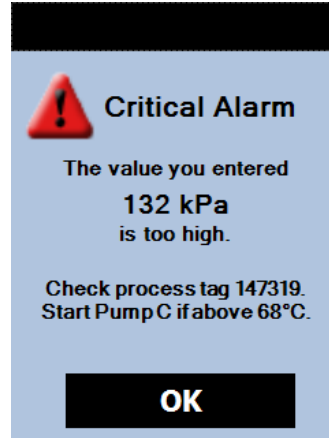


Once an operator has completed an inspection route, they simply return *Pocket PM* into its cradle and the data is automatically transferred while the batteries are recharged simultaneously. If there are more than one *Pocket PM* unit, then data is back-synchronised so all units have a complete historic trend of the entire plant.

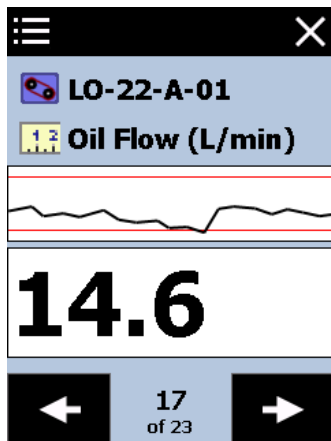


Instant feedback

Using *Pocket PM*, the operator can react immediately to screen instructions. Each measurement point can have warning (red) alarms and alert the operator as soon as problem detected. Furthermore, the value of collected data is enhanced calculations that are calculated on the spot - the machine's mean very little in themselves, but the machine's calculated understood and assessed.



problems with on- (yellow) and critical conditions are by user-defined process variables may efficiency is easily



An extensive range of customisable algorithms are provided for analysing performance of both static and rotating equipment, including pumps, compressors, turbines, heat exchangers and control valves.

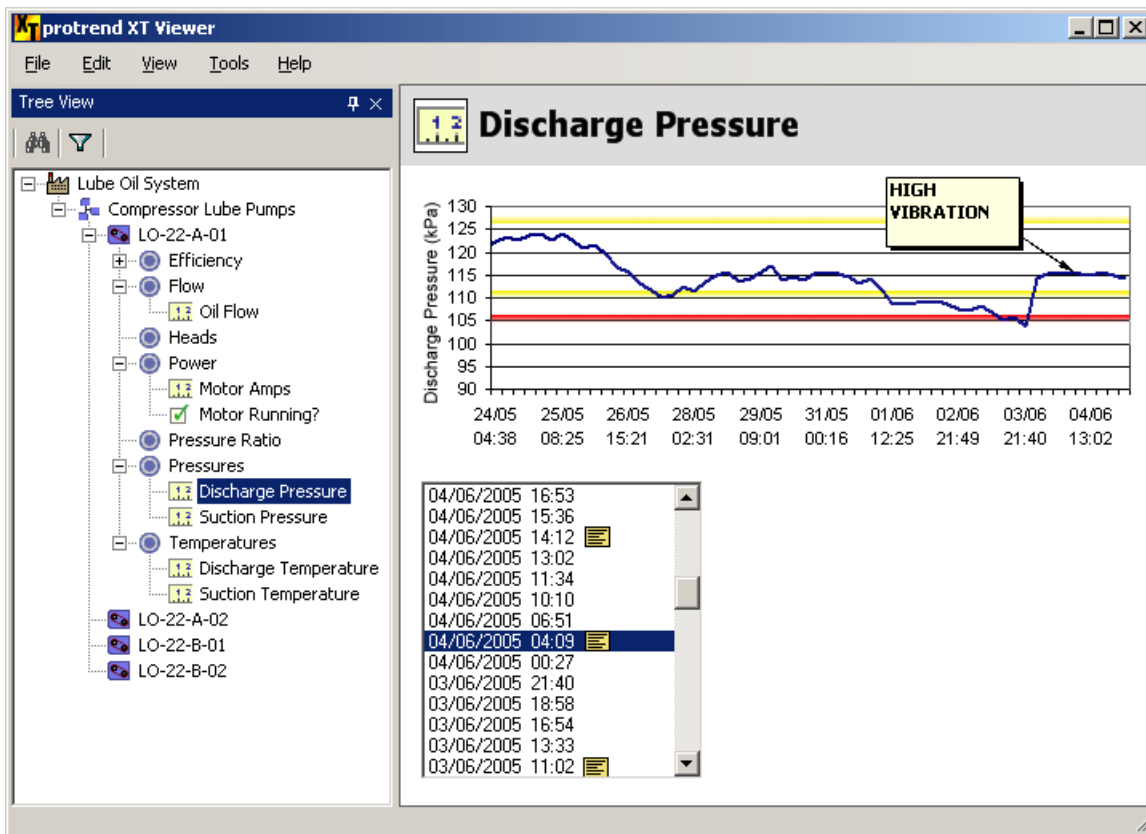
Pocket PM displays the last thirty values recorded for a measurement as a historic trend chart. The operator can easily assess whether a machine's condition is degrading and take appropriate action.



Informative Reporting

While *Pocket PM* provides a useful historic trending feature, even more power are the charting tools in supporting application *Protrend XT*. Multiple variables can be trended against each other in various plot styles. *Protrend XT* also supports important and viewing multi-axis or spectral data, thus providing an authoritative tool for transforming raw data into usable information for effective decision-making.

Protrend XT can generate customisable reports of data collected, showing trends, alarm level breaches, and even notes recorded by operators as they completed the route.





Specifications

Physical Characteristics

Type NV6238

Dimensions: 191x90x50mm

Weight: (inc battery) 486-568g
depending on options

Type NV6242

Dimensions: 213x94x46mm

Weight: (inc battery) 483-568g
depending on options

Battery

Type NVNV6238

Internal 4000mAh Li-Ion

Field replaceable

8-10hr lifetime, 4hr recharge time

Type NV6242

Internal 1550 mAh Li-Ion

Field replaceable

5-8hr lifetime, 4hr recharge time

Memory

64mb Compact Flash, expandable to 1Gb

Touch Screen

Type NVNV6238

240x320px, 64k colour, backlight

Type NV6242

240x320px, greyscale, backlight

Keypad

Numeric keypad, navigation keys,
alphanumeric mode; on-screen keyboard.

Communications

Type NVNV6238

RS-232, IrDA, USB or Ethernet

4-way docking station suppliable

Type NV6242

RS-232, IrDA or 802.11b (wireless)

Environmental

Type NV6238

Operating temp: -10° to +60°C

Rain and dust resistant

Withstands 1.5m drops to concrete

Type NV6242

Operating temp: -20° to +50°C

Windblown rain and dust resistant

Withstands 1.2m drops to concrete

Regulatory Approvals

Type NVNV6238

FCC Class B, UL listing, CE mark

Type NV6242

FCC Class B, UL listing CE mark

 II 2G EEx ib IIC T4

Protrend XT (Type NV6714)

OS Requirements:

Windows NT or Windows XP

Databases supported:

Access, SQL Server, Oracle (or others
with ODBC connectivity support)